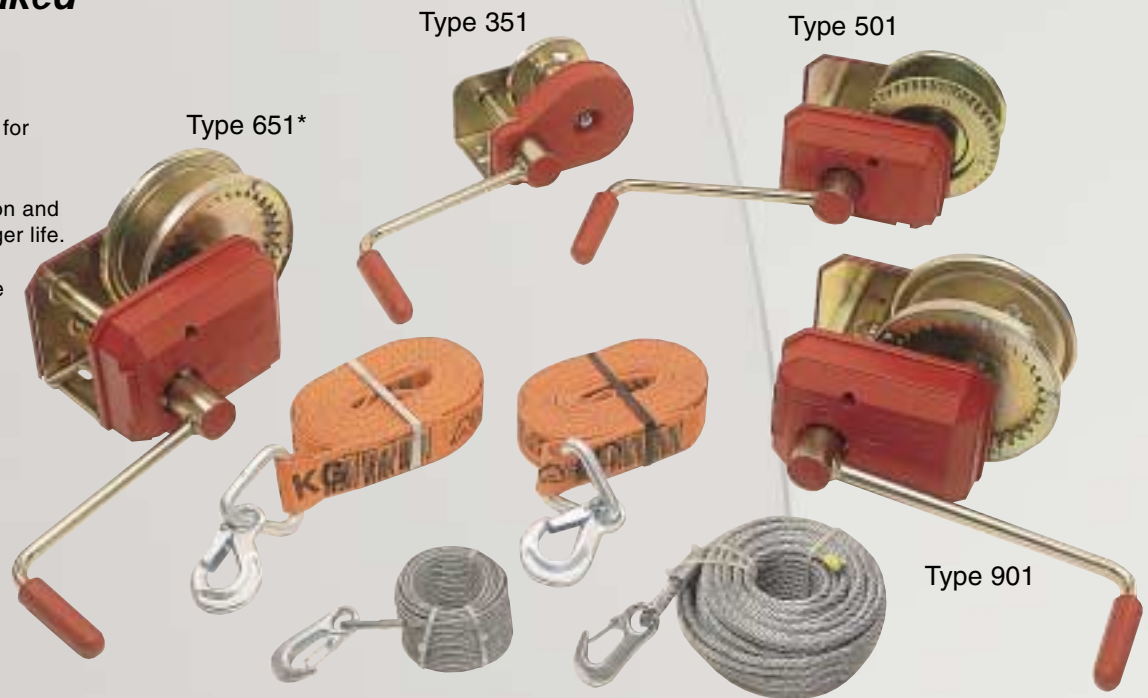


Safety Winches

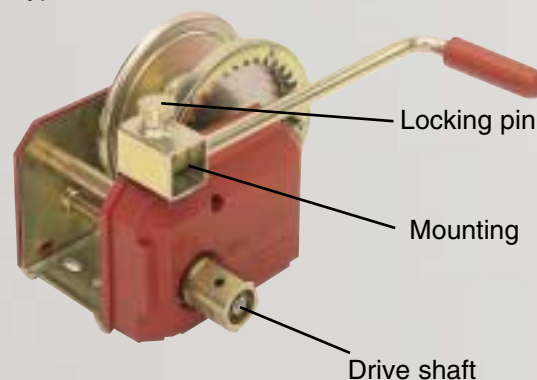
Load Pressure Braked

Product Features

- Safety load pressure brake.
- Fully enclosed reduction gearing for protection.
- Automatic cable unwind option.
- Fully galvanised steel construction and yellow chromatised finish for longer life.
- Protective side cover.
- Ergonomic crank handle for more user friendly operation.
- Finely tuned load pressure brake for ease of operation.
- High safety factors on cable and straps.
- Cable or strap option for right combination.



Type 901A/1201A



To unwind the cable or belt quickly, the handle can be released and placed in the bracket provided

Conform to EC Directive on Machinery 89/392EEC valid from 1.1.95

The steel wire cables are tested to DIN 15020 Part 1 standard which includes a 2.5 times maximum load safety factor.

The straps have been tested in accordance with EC Directive on Machinery 89/392 EEC with a safety factor of 7 for the strap and 4 for the strap hooks.

Each winch is supplied boxed with operating instructions and cable attachment fixings. Available separately are the steel wire cables, straps and attachment fastener.

The latest AL-KO range of winches provides the muscle that ensures problems in lifting, manoeuvring or positioning heavy loads are a thing of the past. Whether it's caravans on boggy ground, boat trailers up slipways, irrigation pumps up riverbanks, rubble slides up scaffolding, erecting lighting towers on motorways etc - whatever the task there is an AL-KO winch with cable or strap to match the job. There are 2 versions of AL-KO winches. Version 1 with a load pressure brake, has 4 types to provide the optimum performance for the specified role. Version 2, has a load pressure brake together with an automatic cable unwind function and is available for the Type 901A & 1201A winch. All 6 types have fully enclosed reduction gearing which helps protect from contamination. The opposite side to the gearing housing also has a cover. This protects the edges as well as protecting the operator from protruding screws. The ergonomically designed crank handle provides a safe, secure and comfortable grip when operating the winch. The load pressure brake is very finely tuned; this is apparent from the ease with which a load can be lowered, with only a slight amount of manual force being required. These winches together with a range of either matching cables or belts enable operators to select the right combination for their requirements.

* Please note Type 651 has now been discontinued.

Accessories

Specification and Technical Data

AL-KO winches are designed to operate in two modes - lifting or hauling. Table 1 includes details of loads when lifting at 90° and Table 2 shows loads that can be hauled, and at what gradient.

Version with load pressure brake

- Four types for lifting loads between 130-900kg and hauling loads between 130-1200kg (depending on gradient)
- Winding and unwinding only possible by rotating handle.
- The load pressure brake is only operational if there is a minimum traction load (see table 1 & 2).
- **Warning - handle must be removed.**

Version A - with load pressure brake and automatic cable unwind

- One type for lifting loads between 330 and 900kg and hauling loads between 330kg and 1200kg. (depending on gradient).
- One type for lifting loads between 500 and 1250kg and hauling loads between 500 and 1700kg. (depending on gradient).

● Winding and unwinding is via handle. Unwinding without load is also possible by turning the handle two complete turns counter clockwise - the cable drum must not turn with it; then pull the locking pin; taking off the handle and repositioning it on the guard provided. The cable can now be freely pulled off the drum. (note: removing the handle disconnects the load pressure brake mechanism).

Safety Notes

- These load pressure brake winches must be operated with the minimum load as specified in Table 1 and 2. If this minimum load is not applied, the load pressure brake will not function.
- Only the type 901A/1201A (pt nos 244897 & 249129) should be operated with the handle disengaged, and then only when utilising the auto unwind function.

In line with our company policy of constant improvement, we reserve the right to change the specifications without notice.

Table 1 Includes Traction Load Parameters when Lifting

Version	Part No.	Type	Traction Load Data for Vertical (90°) Lift Max Traction Force			Manual Force da. N kg	Min Load da. N kg	Drum Dia mm	Drum Capacity m	Cable Dia mm	Handle Length mm	Reduction	Nett Wt kg
			Min da. N kg	Avg da. N kg	Max da. N kg								
	244893	351 braked	350	250	130	20	25	38	15	4	200	2,50:1	2
	244894	501 braked	500	330	170	20	25	48	20	5	230	3,75:1	4
	244895*	651 braked*	650*	440*	230*	18*	25*	63*	20*	6*	230*	8,75:1*	7*
	244896	901 braked	900	615	330	19	25	63	20	7	300	8,75:1	7
A	244897	901A braked auto unwind	900	615	330	19	25	63	20	7	300	8,75:1	8
A	249129	1201A braked auto unwind	1250	875	500	20	40	70	25	7	300	10,7:1	13

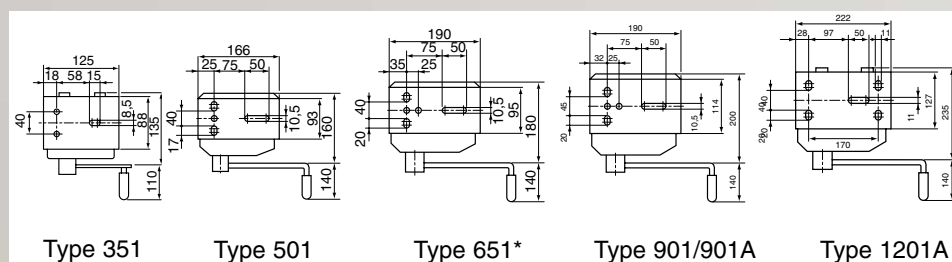


Table 3 Matching Belt and Attachment - only available separately

Part No.	Type	Length m	Width m	Nett Weight kg	Belt attachment Part No.
245355	351	3	35	0.33	352516
245356	501	4	35	0.49	352514
245357*	651*	5*	35*	0.68*	352515*
245358	901/901A	6	50	1.22	352516
249115	1201A	9	55	2.10	352657

Table 4 Matching Cables - only available separately

Part No.	Type	Length m	Cable Dia. mm	DIN	Nett Weight kg
209524	351	15	4	3060	1.0
267464	351	10	4	3060	0.6
209525	501	20	5	3060	1.8
267465	501	10	5	3060	1.0
209526*	651*	20*	6*	3066*	2.7*
267466*	651*	10*	6*	3066*	1.4*
209527	901/901A	20	7	3066FE	4.1
267467	901/901A	12.5	7	3066FE	2.1
249980	1201A	25	7	3060SE	4.3

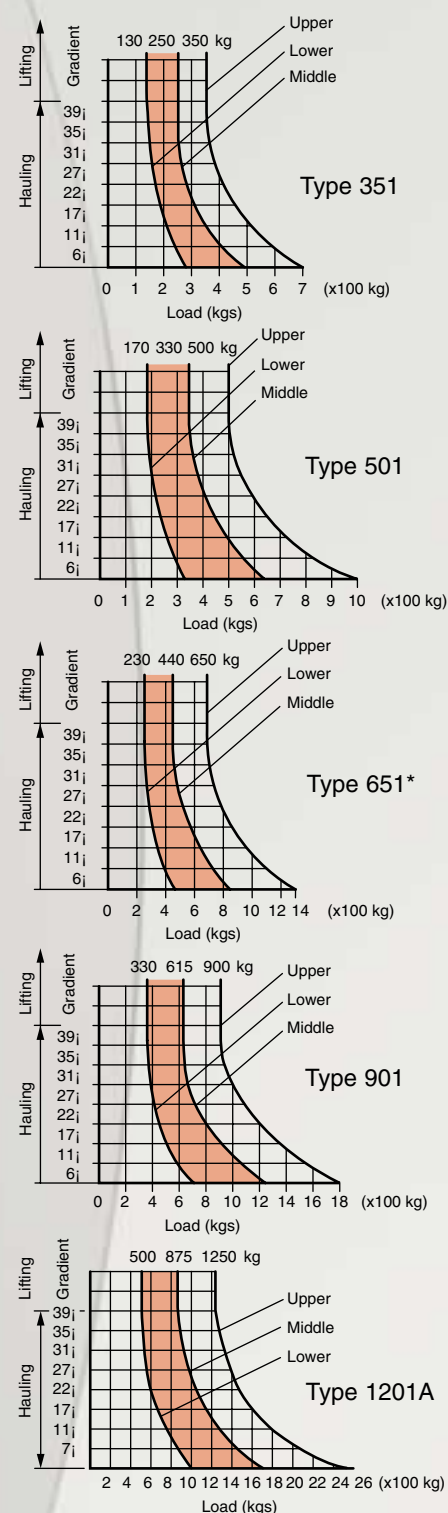
In line with our company policy of constant improvement, we reserve the right to change the specifications without notice.

AL-KO Kober Limited, South Warwickshire Business Park, Kineton Road, Southam, Warwickshire, CV47 0AL
Tel: (01926) 818500 Fax: (01926) 818562

www.al-ko.co.uk mail@al-ko.co.uk

Table 2

Traction Load Diagrams for Drawing and Hauling



Coefficient of Friction $\mu = 0.5$

* Please note Type 651 has now been discontinued.